



*Spring Concert
of Dance*

2025



INFORMATIONAL PACKET

WE GOT THE **BEAT!**



2025 SPRING CONCERT OF DANCE INFORMATIONAL PACKET

We are excited to announce the plans for MPA's 2025 Spring Concert of Dance! Photo Days will take place at **MPA studios May 17th-21st**, Dress Rehearsals will take place at the **Sauk Prairie River Arts Center May 18th-22nd** and the performances will take place on **May 23rd and 24th, 2025 at the Sauk Prairie River Arts Center**. We understand that committing to the Spring Concert is a big decision for all of our dancers and families, so we have carefully laid out all of the requirements for participation in this year's concert in this informational packet. It is important to us here at MPA to stay organized in order to make the Spring Concert a huge success. Please help us in doing this by reading over the following information carefully.

Dress Rehearsal:

- **Dress Rehearsals will be held May 18th from 10:00 AM-6:00 PM and 19th, 20th and 22nd from 4:00-9:30 PM each day at Sauk Prairie River Arts Center, 105 9th St. Prairie du Sac, WI.**
- **NO REGULAR CLASSES MAY 19th-24th.**
- Please refer to pages 4-6 for your specific dress rehearsal schedule assignments.
- ARRIVE 10 MINUTES prior to your rehearsal time with hair and make-up done. We are planning to run on time. THE TIME ON THE DRESS REHEARSAL LIST IS THE TIME YOU ARE ON STAGE...If you are late, you have missed your rehearsal!
- Enter at doors E5 and E6 (These doors are at the front of the River Arts Center) and proceed to your left directly to the check in table at the entrance of Leola Hall. *No entrance through the art gallery.*
- Once dancers have entered the RAC and checked in at the designated check in table with MPA Staff, they can proceed directly to their assigned dressing rooms.
- Upon arrival, place all costumes and dance bags in assigned dressing rooms.
- DOUBLE CHECK all costumes, undergarments, tights, accessories, and shoes before you leave home (put your name on all your items as well). This is your dress rehearsal to make sure you are prepared for your show, this includes your costuming.
- Have a snack/dinner before you arrive. You need all the energy you can get for your time on stage!
- Dancers are to go to the audience once they are prepared for their dress rehearsal and sit in their corresponding level/class spots (please look for a sign to guide you were to sit).
- If you have more than one dance, be aware of your costume changes and be ready for each rehearsal time.
- When your 10 minutes of stage time for **all** of your dances are complete, you are then dismissed.
- Be respectful of our host theater. Clean up after yourself.
- NO EATING OR DRINKING IN THE RIVER ARTS CENTER.

Performance:

- **The Spring Concert of Dance performances will be held on Friday, May 23rd at 7:00 PM and Saturday, May 24th at 1:00 PM and 6:00 PM at Sauk Prairie River Arts Center, 105 9th St. Prairie du Sac, WI.**
- Please refer to pages 4-6 for your class show assignment AND to pages 7-9 for the performance orders.
- DOUBLE CHECK all costumes, undergarments, tights, accessories, and shoes before you leave home (Put your name on all your items as well). This is your big day!
- All dancers are to arrive at the theater with their hair and make-up done.
- **Dancer call times Friday, May 23rd:**
 - All Pre-Professional 1-7 Level dancers and any YPG dancers are to arrive at the theater at 5:00 PM for warm-up on stage from 5:30-6:30 PM.
 - All Jr. 1-4 and Sr. 1-3 Level dancers are to arrive at the theater 1 hour before show time.
- **Dancer call times Saturday, May 24th:**
 - All Pre-Professional 1-7 Level dancers are to arrive at the theater at 11:00 AM for warm-up on stage from 11:30-12:30 PM.
 - All Jr. 1-4 are to arrive at the theater 1 hour before their show time.
 - All Pre-Ballet and Fancy Feet dancers are to arrive 30 minutes before their show time.
- **Dancers will enter the River Arts Center at doors E5 and E6 and check in at the designated check in table with MPA Staff and proceed directly to the assigned dressing rooms. *No entrance through the art gallery.***
- Upon arrival, place costumes and dance bags in assigned dressing rooms. This is where you will change and wait during the show.
- All dancers are to remain backstage throughout the whole show.
- There will be a bow at the end of each half of the performance.
- If you have a **quick change** (less than 2 dances between numbers), please find an MPA instructor upon check in to help you set up in the quick-change area. You will need a small laundry basket to keep your items in for your quick change.
- All other changes will be made in the dressing rooms.
- MPA Staff and parent volunteers only are allowed backstage.
- There will be runners taking the students to and from stage and dressing room. Dancers make sure that once you perform each dance, you return to the dressing rooms to get ready quickly for your next number.
- We ask that once the performance begins, that parents remain in their seats for the entire show. It is extremely disruptive to the dancers and other audience members if people are standing/sitting and entering/exiting during the performance.

- NO EATING OR DRINKING IN THE RIVER ARTS CENTER.
- Dancers will be dismissed after the performance is completed and will greet family members and friends in the front lobby after the show exiting from Leola Hall.
- DOUBLE CHECK all costumes, undergarments, tights, accessories, and shoes before you leave the theater. Take everything home with you. MPA and the River Arts Center are not responsible for lost items.
- Be respectful of our host theater. Clean up after yourself.

Photos:

- We are excited to be working with EPS Photography again this year!
- Photo Days will take place at MPA studios May 18th-21st, 2025.
- This year the photo sessions will be for individual photos only, unless specifically contacted by the MPA Staff to take part in a group photo.
- Please refer to pages 14-16 for more detailed information about our photographer and how this year's Spring Concert photos will be handled.

Spring Concert Tickets:

- Tickets will be sold online at <http://www.recitalticketing.com/21424/> or via our website and will be available for purchase starting on **Saturday, April 12, 2025 at 10:00 AM.**
- We ask that all families purchase a minimum of 4 tickets.
- There will be no limit on the number of tickets you can purchase this year. Tickets will be sold on a first come first serve basis. The sooner you purchase your tickets, the more choice you will have as to where your seating will be.

Spring Concert Parent Volunteers:

- **WE ASK THAT EACH FAMILY SIGN UP FOR A VOLUNTEER POSITION.** The success and safety of this event is of the most importance, and we cannot do it without your help!
- The website to sign up is <https://www.signupgenius.com/go/10C054EAAA82DA7F49-54933845-spring>
- THANK YOU for your help!

Photos and Videos:

- For the safety of the dancers and as a courtesy to the audience members around you, **photography and videotaping of any kind during the performance is strictly prohibited.** This includes Phones, iPods, iPads and all other devices.
- A professional video of the performance will be available for purchase.
- More information will be provided at a later date.



2025 SPRING CONCERT OF DANCE

DRESS REHEARSAL SCHEDULE (PAGE 1 of 3)

Class Day	Class Time	Class	Instructor	Title of Dance	Dress Rehearsal Day	Dress Rehearsal Time	Show
Monday	6:45-8:00	PP 2 Jazz	Crystal	Let's Get Loud	Sun. (5/18)	10:00-10:15	C
Wednesday	7:15-8:30	PP 3 Jazz	Meghan	Our Hearts Beat As One	Sun. (5/18)	10:15-10:30	C
Monday	8:00-9:15	PP 2 Modern	Crystal	Rhythmic Patterns	Sun. (5/18)	10:30-10:45	C
Thursday	4:15-5:30	PP 3 Modern	Crystal	One Hundred Strings	Sun. (5/18)	10:45-11:00	C
Wednesday	7:15-8:15	Sr. 1-3 Jazz	Crystal	I Love Rock 'n' Roll	Sun. (5/18)	11:00-11:15	A
Monday	7:15-9:15	Sr. Choreo - Evelyn	Jessica	When We Were Young	Sun. (5/18)	11:15-11:25	B
Thursday	7:30-8:30	Sr. 1-3 Modern	Crystal	Sound of Music	Sun. (5/18)	11:25-11:40	A
Monday	7:15-9:15	Sr. Choreo - Cam	Jessica	Beautiful Day	Sun. (5/18)	11:40-11:50	A
Wednesday	8:30-9:30	Sr. 1-3 Ballet	Meghan	Célébration au Palais	Sun. (5/18)	11:50-12:05	A
Thursday	5:30-7:00	Sr. Company - Cesar	Crystal	Hairspray!	Sun. (5/18)	12:05-12:20	C
Monday	7:15-9:15	Sr. Choreo - Grace	Jessica	MJ	Sun. (5/18)	12:20-12:30	C
Thursday	5:30-7:00	Sr. Company - Richard	Crystal	Whispers of the Forest	Sun. (5/18)	12:30-12:45	A
Monday	7:15-9:15	Sr. Choreo - Hannah	Jessica	Rain Dance	Sun. (5/18)	12:45-12:55	A
Thursday	5:30-7:00	Sr. Company - Crystal	Crystal	Monsieur Desplat's Musical Suite	Sun. (5/18)	12:55-1:10	B
N/A	N/A	Staff Break	N/A	N/A	Sun. (5/18)	1:10-2:00	N/A
Monday	5:45-7:15	PP 6/7 Jazz	Jessica	Hip Hip Chin Chin	Sun. (5/18)	2:00-2:15	A,B,C
Monday	5:45-7:15	PP 4/5 Jazz	Meghan	Ride The Rhythm (My Beat)	Sun. (5/18)	2:15-2:30	B
Thursday	7:30-9:00	PP 6/7 Modern	Jessica	Cadence	Sun. (5/18)	2:30-2:45	B,C
Wednesday	5:45-7:15	PP 4/5 Modern	Crystal	Ring, Drum, Run	Sun. (5/18)	2:45-3:00	B
Monday	7:15-9:15	Sr. Ensemble - Jacob	Jessica	Egypt	Sun. (5/18)	3:00-3:15	C
Monday	7:15-9:15	Jr. Ensemble - Richard	Meghan	Layers of Becoming	Sun. (5/18)	3:15-3:30	A
Monday	7:15-9:15	Sr. Ensemble - Jessica	Jessica	Bang Your Drum!	Sun. (5/18)	3:30-3:45	B
Monday	7:15-9:15	Jr. Ensemble - Jacob	Meghan	Hummed Low	Sun. (5/18)	3:45-4:00	C
Monday	7:15-9:15	Sr. Ensemble - Meghan M.	Jessica	American Sing, Sing, Swing!	Sun. (5/18)	4:00-4:15	C
Monday	7:15-9:15	Jr. Ensemble - Robert	Meghan	The Wall	Sun. (5/18)	4:15-4:30	C
Monday	7:15-9:15	Sr. Ensemble - Cesar	Jessica	Come Rain or Come Shine	Sun. (5/18)	4:30-4:45	A
Monday	7:15-9:15	Jr. Ensemble - Meghan	Meghan	Dancin' Fool	Sun. (5/18)	4:45-5:00	B
Monday	7:15-9:15	Sr. Choreo - Lucy	Jessica	Let's Groove	Sun. (5/18)	5:00-5:10	B
Monday	7:15-9:15	Sr. Choreo - Summar	Jessica	Empty Bench	Sun. (5/18)	5:10-5:20	A
Monday	7:15-9:15	Sr. Choreo - Maudie	Jessica	All The Lonely People	Sun. (5/18)	5:20-5:30	C
Monday	7:15-9:15	Sr. Choreo - Sam	Jessica	Go Live Your Dream	Sun. (5/18)	5:30-5:40	B
Tuesday	3:45-4:30	Fancy Feet-Ballet	Erin	Scène et Marche du Pharoan	Mon. (5/19)	4:00-4:15	B
Tuesday	3:45-4:30	Fancy Feet-Tap	Erin	If It Aint Got The Swing	Mon. (5/19)	4:15-4:30	B
Monday	5:45-6:45	Jr. Company - Cesar	Crystal	Rhythm Nation	Mon. (5/19)	4:30-4:45	A,C
Tuesday	8:45-9:15	Sr. 4-7 Hip Hop	Ashley	Here Comes The Rhythm	Mon. (5/19)	4:45-5:00	C
Monday	5:45-6:45	Jr. Company - Meghan	Crystal	Movement	Mon. (5/19)	5:00-5:15	B,C
Tuesday	7:30-8:45	Sr. 4-7 Modern Fusion	Ashley	Piano Man	Mon. (5/19)	5:15-5:30	C



Midwest Performing Arts

2025 SPRING CONCERT OF DANCE

DRESS REHEARSAL SCHEDULE (PAGE 2 of 3)

Class Day	Class Time	Class	Instructor	Title of Dance	Dress Rehearsal Day	Dress Rehearsal Time	Show
Thursday	4:15-5:15	Sr. 4-7 Musical Theater	Jessica	The Rhythmic Frug	Mon. (5/19)	5:30-5:45	C
N/A	N/A	YPG Opener	Jessica	We Got The Beat	Mon. (5/19)	5:50-6:40	A,B,C
Monday	5:00-5:45	Sr. 4-7 Tap	Jessica	The Rhythm	Mon. (5/19)	6:45-7:00	C
Tuesday	5:30-6:30	PP 1 Modern	Taylor	Ready, Set, Go!	Mon. (5/19)	7:00-7:15	A
Tuesday	4:30-5:30	Sr. 1-3 Musical Theater	Taylor	I've Got Rhythm	Mon. (5/19)	7:15-7:30	A
Monday	4:45-5:45	PP 1 Jazz	Crystal	Mr. Saxobeat	Mon. (5/19)	7:30-7:45	A
Tuesday	6:30-7:00	Sr. 1-3 Tap	Ashley	Listen To The Music	Mon. (5/19)	7:45-8:00	A
Tuesday	4:15-5:15	PP 1 Ballet	Meghan	Le Village des Pecheurs	Mon. (5/19)	8:00-8:15	A
Tuesday	7:00-7:30	Sr. 1-3 Hip Hop	Ashley	B.E.A.T.	Mon. (5/19)	8:15-8:30	A
Thursday	4:15-5:30	PP 2 Ballet	Meghan	Le Reve	Mon. (5/19)	8:35-8:50	C
Wednesday	5:15-6:45	PP 3 Ballet	Celia	Le Triumphe de L'amour	Mon. (5/19)	8:50-9:05	C
Tuesday	7:30-9:00	PP 2/3 Ballet	Meghan	Aspacia Se Réveille	Mon. (5/19)	9:10-9:25	C
Saturday	8:30-9:00	Pre-Ballet 1/2	Meghan	Le Abeille	Tue. (5/20)	4:00-4:15	B
Monday	4:15-4:45	Pre-Ballet 1/2	Meghan	Le Singe	Tue. (5/20)	4:15-4:30	B
Saturday	10:00-11:30	PP 6/7 Ballet	Jessica	Le Chasse Royale	Tue. (5/20)	4:30-4:45	A,C
Tuesday	5:15-6:45	PP 5/6 Ballet	Ben	Recontre au Palais	Tue. (5/20)	4:50-5:05	B,C
Tuesday	5:15-6:45	PP 7 Ballet	Meghan	Celebration des Cymboles	Tue. (5/20)	5:05-5:25	B,C
Wednesday	7:15-8:45	PP 4/5 Ballet	Celia	Ta-Hor au Palais	Tue. (5/20)	5:25-5:40	A,C
Thursday	5:15-6:45	PP 6/7 Ballet	Ben	Promenade au Palais	Tue. (5/20)	5:40-5:55	A,B
Saturday	10:00-11:30	PP 4/5 Ballet	Meghan	Marche au Palais	Tue. (5/20)	5:55-6:10	A,B
Saturday	11:30-12:15	PP 6/7 Pointe	Jessica	Grand Pas des Chasseresses	Tue. (5/20)	6:10-6:25	A,C
Thursday	7:30-9:00	PP 4 Ballet	Ben	Le Royaume du Nil	Tue. (5/20)	6:25-6:40	B,C
Tuesday	6:45-7:30	PP 7 Pointe	Meghan	Aspacia au Palais	Tue. (5/20)	6:40-6:50	B,C
Tuesday	6:45-7:30	PP 7 Pointe	Meghan	Entrée de Aspacia	Tue. (5/20)	6:50-7:00	B,C
Tuesday	6:45-7:30	PP 7 Pointe	Meghan	Variation d'Aspacia	Tue. (5/20)	7:00-7:10	B,C
Tuesday	6:45-7:30	PP 5/6 Pointe	Ben	Grand Défilé: Variation II	Tue. (5/20)	7:10-7:20	B,C
Tuesday	6:45-7:30	PP 5/6 Pointe	Ben	Grand Défilé: Variation III	Tue. (5/20)	7:20-7:30	B,C
Tuesday	6:45-7:30	PP 5/6 Pointe	Ben	Le Danse du Village	Tue. (5/20)	7:30-7:40	B,C
Thursday	9:00-9:30	PP 4 Pointe	Ben	Danse du Palais	Tue. (5/20)	7:40-7:55	B,C
Thursday	6:45-7:30	PP 6/7 Pointe	Ben	Rivière: Variation I	Tue. (5/20)	7:55-8:05	A,B
Thursday	6:45-7:30	PP 6/7 Pointe	Ben	Rivière: Variation II	Tue. (5/20)	8:05-8:15	A,B
Thursday	6:45-7:30	PP 6/7 Pointe	Ben	Rivière: Variation III	Tue. (5/20)	8:15-8:25	A,B
Wednesday	8:45-9:30	PP 4/5 Pointe	Celia	Variation au Palais	Tue. (5/20)	8:25-8:35	A,C
Wednesday	8:45-9:30	PP 4/5 Pointe	Celia	Espouse fe Pecheur	Tue. (5/20)	8:35-8:45	A,C
Wednesday	8:45-9:30	PP 4/5 Pointe	Celia	Variation de Ramze	Tue. (5/20)	8:45-8:55	A,C
Saturday	11:30-12:15	PP 4/5 Pointe	Meghan	Grand Défilé	Tue. (5/20)	8:55-9:10	A,B



Midwest Performing Arts

2025 SPRING CONCERT OF DANCE

DRESS REHEARSAL SCHEDULE (PAGE 3 of 3)

Class Day	Class Time	Class	Instructor	Title of Dance	Dress Rehearsal Day	Dress Rehearsal Time	Show
Wednesday	5:15-6:15	Jr. 3/4 & PP 1 Ballet	Meghan	Les Fiancailles	Thur. (5/22)	4:30-4:45	A
Wednesday	4:45-5:45	Jr. 1/2 Ballet	Erin	Variante de Ta-Hor	Thur. (5/22)	4:45-5:00	B
Monday	4:45-5:45	Jr. 3/4 Ballet	Meghan	Pas d'action	Thur. (5/22)	5:00-5:15	A
Monday	3:30-4:30	Jr. 1/2 Ballet	Erin	Coda	Thur. (5/22)	5:15-5:30	B
Wednesday	6:15-6:45	Jr. 3/4 Tap	Meghan	New York City Rhythm	Thur. (5/22)	5:30-5:45	A
Monday	4:30-5:00	Jr. 1/2 Tap	Erin	Turn The Beat Around	Thur. (5/22)	5:45-6:00	B
Monday	4:15-4:45	Jr. 3/4 Hip Hop	Crystal	Juju On Dat Beat	Thur. (5/22)	6:00-6:15	A
Wednesday	3:45-4:45	Jr. 1/2 Jazz	Crystal	These Sounds	Thur. (5/22)	6:15-6:30	B
Thursday	5:30-6:30	Jr. 3/4 Modern	Meghan	Rhythm of the Rain	Thur. (5/22)	6:30-6:45	A
Tuesday	4:15-5:15	Jr. 1/2 Modern	Crystal	Rhythm of Love	Thur. (5/22)	6:45-7:00	B
Thursday	6:30-7:30	Jr. 3/4 Jazz	Meghan	And The Beat Goes On	Thur. (5/22)	7:00-7:15	A



2025 SPRING CONCERT OF DANCE

Friday 7:00 PM-SHOW ORDER

Show order	Class Day	Class Time	Class	Instructor	Title of Dance
1	Saturday	10:00-11:30	PP 6/7 Ballet	Jessica	Overture & Le Chasse Royale
2	Saturday	10:00-11:30	PP 4/5 Ballet	Meghan	Marche au Palais
3	Monday	4:45-5:45	Jr. 3/4 Ballet	Meghan	Pas d'action
4	Tuesday	4:15-5:15	PP 1 Ballet	Meghan	Le Villade des Pecheurs
5	Saturday	11:30-12:15	PP 6/7 Pointe	Jessica	Grand Pas des Chasseresses
6	Wednesday	8:45-9:30	PP 4/5 Pointe	Celia	Variation au Palais
7	Wednesday	8:45-9:30	PP 4/5 Pointe	Celia	Espouse fe Pecheur
8	Wednesday	8:45-9:30	PP 4/5 Pointe	Celia	Variation de Ramze
9	Thursday	6:45-7:30	PP 6/7 Pointe	Ben	Rivière: Variation I
10	Thursday	6:45-7:30	PP 6/7 Pointe	Ben	Rivière: Variation II
11	Thursday	6:45-7:30	PP 6/7 Pointe	Ben	Rivière: Variation III
12	Saturday	11:30-12:15	PP 4/5 Pointe	Meghan	Grand Défile
13	Wednesday	8:30-9:30	Sr. 1-3 Ballet	Meghan	Célébration au Palais
14	Wednesday	5:15-6:15	Jr. 3/4 & PP 1 Ballet	Meghan	Les Fiancailles
15	Wednesday	7:15-8:45	PP 4/5 Ballet	Celia	Ta-Hor au Palais
16	Thursday	5:15-6:45	PP 6/7 Ballet	Ben	Promenade au Palais
17	N/A	N/A	Act 1 Finale	N/A	Le Chasse Royale
N/A	N/A	N/A	INTERMISSION	N/A	N/A
18	N/A	N/A	YPG Opener	Jessica	We Got The Beat
19	Thursday	7:30-8:30	Sr. 1-3 Modern	Crystal	Sound Of Music
20	Thursday	6:30-7:30	Jr. 3/4 Jazz	Meghan	And The Beat Goes On
21	Tuesday	5:30-6:30	PP 1 Modern	Taylor	Ready, Set, Go!
22	Monday	7:15-9:15	Senior Choreography - Hannah	Jessica	Rain Dance
23	Tuesday	7:00-7:30	Sr. 1-3 Hip Hop	Ashley	B.E.A.T.
24	Wednesday	6:15-6:45	Jr. 3/4 Tap	Meghan	New York City Rhythm
25	Monday	7:15-9:15	Senior Choreography - Summar	Jessica	Empty Bench
26	Monday	4:45-5:45	PP 1 Jazz	Crystal	Mr. Saxobeat
27	Tuesday	6:30-7:00	Sr. 1-3 Tap	Ashley	Listen To The Music
28	Monday	4:15-4:45	Jr. 3/4 Hip Hop	Crystal	Juju On Dat Beat
29	Monday	7:15-9:15	Sr. Ensemble - Cesar	Jessica	Come Rain or Come Shine
30	Wednesday	7:15-8:15	Sr. 1-3 Jazz	Crystal	I Love Rock 'n' Roll
31	Thursday	5:30-7:00	Sr. Company - Richard	Crystal	Whispers of the Forest
32	Monday	5:45-6:45	Jr. Company - Cesar	Crystal	Rhythm Nation
33	Monday	7:15-9:15	Senior Choreography - Cam	Jessica	Beautiful Day
34	Thursday	5:30-6:30	Jr. 3/4 Modern	Meghan	Rhythm of the Rain
35	Tuesday	4:30-5:30	Sr. 1-3 Musical Theater	Taylor	I've Got Rhythm
36	Monday	7:15-9:15	Jr. Ensemble - Richard	Meghan	Layers of Becoming
N/A	N/A	N/A	ANNOUNCEMENTS- STAFF, ASSISTANTS, SENIORS	N/A	N/A
37	Monday	5:45-7:15	PP 6/7 Jazz	Jessica	Hip Hip Chin Chin
38	N/A	N/A	Act 2 Finale	N/A	We Got The Beat

**2025 SPRING CONCERT OF DANCE**

Saturday 1:00 PM-SHOW ORDER

Show Order	Class Day	Class Time	Class	Instructor	Title of Dance
1	Tuesday	5:15-6:45	PP 7 Ballet	Meghan	Overture & Celebration des Cymbales
2	Saturday	10:00-11:30	PP 4/5 Ballet	Meghan	Marche au Palais
3	Monday	4:15-4:45	Pre-Ballet 1/2	Meghan	Le Singe
4	Wednesday	4:45-5:45	Jr. 1/2 Ballet	Erin	Variante de Ta-Hor
5	Tuesday	5:15-6:45	PP 5/6 Ballet	Ben	Recontre au Palais
6	Thursday	7:30-9:00	PP 4 Ballet	Ben	Le Royaume du Nil
7	Saturday	8:30-9:00	Pre-Ballet 1/2	Meghan	Le Abeille
8	Tuesday	6:45-7:30	PP 7 Pointe	Meghan	Aspacia au Palais
9	Tuesday	6:45-7:30	PP 7 Pointe	Meghan	Entrée de Aspacia
10	Tuesday	6:45-7:30	PP 7 Pointe	Meghan	Variation d'Aspacia
11	Saturday	11:30-12:15	PP 4/5 Pointe	Meghan	Grand Défilé
12	Thursday	6:45-7:30	PP 6/7 Pointe	Ben	Rivière: Variation I
13	Thursday	6:45-7:30	PP 6/7 Pointe	Ben	Rivière: Variation II
14	Thursday	6:45-7:30	PP 6/7 Pointe	Ben	Rivière: Variation III
15	Thursday	9:00-9:30	PP 4 Pointe	Ben	Danse du Palais
16	Tuesday	6:45-7:30	PP 5/6 Pointe	Ben	Grand Défilé: Variation II
17	Tuesday	6:45-7:30	PP 5/6 Pointe	Ben	Grand Défilé: Variation III
18	Tuesday	6:45-7:30	PP 5/6 Pointe	Ben	Le Danse du Village
19	Tuesday	3:45-4:30	Fancy Feet - Ballet	Erin	Scène et Marche de Pharoan
20	Monday	3:30-4:30	Jr. 1/2 Ballet	Erin	Coda
21	Thursday	5:15-6:45	PP 6/7 Ballet	Ben	Promenade au Palais
22	N/A	N/A	Act 1 Finale	N/A	Celebration des Cymbales
N/A	N/A	N/A	INTERMISSION	N/A	N/A
23	N/A	N/A	YPG Opener	Jessica	We Got The Beat
24	Tuesday	4:15-5:15	Jr. 1/2 Modern	Crystal	Rhythm Of Love
25	Monday	7:15-9:15	Senior Choreography - Evelyn	Jessica	When We Were Young
26	Tuesday	3:45-4:30	Fancy Feet - Tap	Erin	If It Aint Got That Swing
27	Monday	5:45-7:15	PP 4/5 Jazz	Meghan	Ride The Rhythm (My Beat)
28	Thursday	7:30-9:00	PP 6/7 Modern	Jessica	Cadence
29	Monday	5:45-6:45	Jr. Company - Meghan	Crystal	Movement
30	Monday	7:15-9:15	Senior Choreography - Lucy	Jessica	Let's Groove
31	Monday	4:30-5:00	Jr. 1/2 Tap	Erin	Turn The Beat Around
32	Monday	7:15-9:15	Jr. Ensemble - Meghan	Meghan	Dancin Fool
33	Monday	7:15-9:15	Sr. Ensemble - Jessica	Jessica	Bang Your Drum!
34	Thursday	5:30-7:00	Sr. Company - Crystal	Crystal	Monsieur Desplat's Musical Suite
35	Monday	7:15-9:15	Senior Choreography - Sam	Jessica	Go Live Your Dream
36	Wednesday	3:45-4:45	Jr. 1/2 Jazz	Crystal	These Sounds
37	Wednesday	5:45-7:15	PP 4/5 Modern	Crystal	Ring, Drum, Run
N/A	N/A	N/A	ANNOUNCEMENTS- STAFF, ASSISTANTS, SENIORS	N/A	N/A
38	Monday	5:45-7:15	PP 6/7 Jazz	Jessica	Hip Hip Chin Chin
39	N/A	N/A	Act 2 Finale	N/A	We Got The Beat



2025 SPRING CONCERT OF DANCE

Saturday 6:00 PM-SHOW ORDER

Show Order	Class Day	Class Time	Class	Instructor	
1	Saturday	10:00-11:30	PP 6/7 Ballet	Jessica	Overture & Le Chasse Royale
2	Wednesday	7:15-8:45	PP 4/5 Ballet	Celia	Ta-Hor au Palais
3	Thursday	4:15-5:30	PP 2 Ballet	Meghan	Le Reve
4	Tuesday	6:45-7:30	PP 7 Pointe	Meghan	Aspacia au Palais
5	Tuesday	6:45-7:30	PP 7 Pointe	Meghan	Entrée de Aspacia
6	Tuesday	6:45-7:30	PP 7 Pointe	Meghan	Variation d'Aspacia
7	Wednesday	5:15-6:45	PP 3 Ballet	Celia	Le Triumph de L'amour
8	Tuesday	6:45-7:30	PP 5/6 Pointe	Ben	Grand Défilé: Variation II
9	Tuesday	6:45-7:30	PP 5/6 Pointe	Ben	Grand Défilé: Variation III
10	Tuesday	6:45-7:30	PP 5/6 Pointe	Ben	Le Danse du Village
11	Thursday	9:00-9:30	PP 4 Pointe	Ben	Danse du Palais
12	Saturday	11:30-12:15	PP 6/7 Pointe	Jessica	Grand Pas des Chasseresses
13	Wednesday	8:45-9:30	PP 4/5 Pointe	Celia	Variation au Palais
14	Wednesday	8:45-9:30	PP 4/5 Pointe	Celia	Espouse fe Pecheur
15	Wednesday	8:45-9:30	PP 4/5 Pointe	Celia	Variation de Ramze
16	Tuesday	7:30-9:00	PP 2/3 Ballet	Meghan	Aspacia Se Réveille
17	Thursday	7:30-9:00	PP 4 Ballet	Ben	Le Royaume du Nil
18	Tuesday	5:15-6:45	PP 5/6 Ballet	Ben	Recontre au Palais
19	Tuesday	5:15-6:45	PP 7 Ballet	Meghan	Celebration des Cymboles
20	N/A	N/A	Act 1 Finale	N/A	Le Chasse Royale
N/A	N/A	N/A	INTERMISSION	N/A	N/A
21	N/A	N/A	YPG Opener	Jessica	We Got The Beat
N/A	N/A	N/A	ANNOUNCEMENTS- STAFF & ASSISTANTS	N/A	N/A
22	Monday	7:15-9:15	Senior Choreography - Grace	Jessica	MJ
23	Thursday	4:15-5:30	PP 3 Modern	Crystal	One Hundred Strings
24	Monday	7:15-9:15	Senior Choreography - Maudie	Jessica	All The Lonely People
25	Monday	5:45-6:45	Jr. Company - Meghan	Crystal	Movement
26	Monday	7:15-9:15	Sr. Ensemble - Jacob	Jessica	Egypt
27	Monday	8:00-9:15	PP 2 Modern	Crystal	Rhythmic Patterns
28	Tuesday	7:30-8:45	Sr. 4-7 Modern Fusion	Ashley	Piano Man
29	Wednesday	7:15-8:30	PP 3 Jazz	Meghan	Our Hearts Beat As One
30	Monday	5:00-5:45	Sr. 4-7 Tap	Jessica	The Rhythm
31	Monday	6:45-8:00	PP 2 Jazz	Crystal	Let's Get Loud
32	Monday	7:15-9:15	Jr. Ensemble - Jacob	Meghan	Hummed Low
33	Thursday	7:30-9:00	PP 6/7 Modern	Jessica	Cadence
34	Thursday	5:30-7:00	Sr. Company - Cesar	Crystal	Haispray!
35	Tuesday	8:45-9:30	Sr. 4-7 Hip Hop	Ashley	Here Comes The Rhythm
36	Monday	7:15-9:15	Sr. Ensemble - Meghan M.	Jessica	American Sing, Sing, Swing!
37	Monday	7:15-9:15	Jr. Ensemble - Robert	Meghan	The Wall
38	Thursday	4:15-5:15	Sr. 4-7 Musical Theater	Jessica	The Rhythmic Frug
39	Monday	5:45-6:45	Jr. Company - Cesar	Crystal	Rhythm Nation
N/A	N/A	N/A	ANNOUNCEMENTS- SENIORS	N/A	N/A
40	Monday	5:45-7:15	PP 6/7 Jazz	Jessica	Hip Hip Chin Chin
41	N/A	N/A	Act 2 Finale	N/A	We Got The Beat



Spring Concert of Dance 2025

COSTUME REQUIREMENTS

	Class	Day	Time	Instructor	Tights	Undergarments	Shoes	Hair	Other
Pre-Dance	Pre-Ballet 1/2	Monday	4:15-4:45 PM	Erin	Pink Footed	Nude Leo (optional)	Pink Ballet	Side Part/ Low Bun	Floral hair clip on right side of bun
	Pre-Ballet 1/2	Saturday	8:30-9:00 AM	Meghan	Pink Footed	Nude Leo (optional)	Pink Ballet	Side Part/ Low Bun	Floral pouf clip on right side of bun
	Fancy Feet - Ballet	Tuesday	3:45-4:30 PM	Erin	Pink Footed	Nude Leo (optional)	Pink Ballet	Side Part/ Low Bun	Tutu & Hair clip on right side of bun
	Fancy Feet - Tap	Tuesday	3:45-4:30 PM	Erin	Pink Footed	Nude Leo (optional)	Black Tap	Side Part/ Low Bun	Fringe Skirt & Hair clip on right side of bun

	Class	Day	Time	Instructor	Tights	Undergarments	Shoes	Hair	Other
Junior Student Division	Jr. 1/2 Ballet	Monday	3:30-4:30 PM	Erin	Pink Footed	Nude Leo	Pink Ballet	Side Part/Low Bun	Sequin flower hair clip on right side of bun
	Jr. 1/2 Tap	Monday	4:30-5:00 PM	Erin	Tan Footed	Nude Leo	Black Tap	Side Part/Low Bun	Bow hair clip on right side of bun and ribbon shoe bows
	Jr. 1/2 Modern	Tuesday	4:15-5:15 PM	Crystal	Tan Footless	Nude Leo	None	Styled out of face	Rhinestone appliqué
	Jr. 1/2 Jazz	Wednesday	3:45-4:45 PM	Crystal	Tan Footed	Nude Leo	Black Jazz	Side Part/Low Bun	Crystal barrette on right side of bun
	Jr. 1/2 Ballet	Wednesday	4:45-5:45 PM	Erin	Pink Footed	Nude Leo	Pink Ballet	Side Part/ Low Bun	Pouf hair clip on right side of bun
	Jr. 3/4 Hip Hop	Monday	4:15-4:45 PM	Crystal	Tan Footed	Nude Leo	MPA Hip Hop	Side Part/ Low Bun	Tube socks & bandana tied around forehead
	Jr. 3/4 Ballet	Monday	4:45-5:45 PM	Meghan	Pink Footed	Nude Leo	Pink Ballet	Side Part/ Low Bun	Floral appliqué
	Jr. 3/4 & PP 1 Ballet	Wednesday	5:15-6:15 PM	Meghan	Pink Footed	Nude Leo	Pink Ballet	Side Part/ Low Bun	Pearl rhinestone hair clip on right side of bun
	Jr. 3/4 Tap	Wednesday	6:15-6:45 PM	Meghan	Black Footed	Nude Leo	Black Tap	Side Part/ Low Bun	Red fedora hat
	Jr. 3/4 Modern	Thursday	5:30-6:30 PM	Meghan	Tan Footless	Nude Leo	None	Side Part/ Low Bun	Rhinestone barrettes on right side of bun
	Jr. 3/4 Jazz	Thursday	6:30-7:30 PM	Meghan	Tan Footed	Nude Leo	Black Jazz	Side Part/ Low Bun	Sequin headband

	Class	Day	Time	Instructor	Tights	Undergarments	Shoes	Hair	Other
Pre-Professional	PP 1 Jazz	Monday	4:45-5:45 PM	Crystal	Tan Footed	Nude Leo	Black Jazz	Side Part/ Low Bun	YPG rhinestone on right side of bun
	PP 1 Ballet	Tuesday	4:15-5:15 PM	Meghan	Pink Footed	Nude Leo	Pink Ballet	Side Part/ Low Bun	Floral gem hair comb on right side of bun
	PP 1 Modern	Tuesday	5:30-6:30 PM	Taylor	None	Nude Leo	None	Side Part/ Low Bun	YPG rhinestone on right side of bun

	Class	Day	Time	Instructor	Tights	Undergarments	Shoes	Hair	Other
Senior Student Division	Sr. 1-3 Musical Theater	Tuesday	4:30-5:30 PM	Taylor	Tan Footed	Nude Leo	Tan Jazz	Side Part/ Low Bun	Hair pouf on right side of bun
	Sr. 1-3 Tap	Tuesday	6:30-7:00 PM	Ashley	Tan Footed	Nude Leo	Black Tap	Side Part/ Low Bun	YPG rhinestone on right side of bun
	Sr. 1-3 Hip Hop	Tuesday	7:00-7:30 PM	Ashley	None	Nude Leo	MPA Hip Hop	Side Part/ Low Bun	Sequin scrunchie around bun
	Sr. 1-3 Jazz	Wednesday	7:15-8:15 PM	Crystal	None	Nude Leo	Black Jazz	Side Part/ Low Bun	MPA will provide hairpiece
	Sr. 1-3 Ballet	Wednesday	8:30-9:30 PM	Meghan	Pink Footed	Nude Leo	Pink Ballet	Side Part/ Low Bun	Pearl vine hairpiece on right side of bun
	Sr. 1-3 Modern	Thursday	7:30-8:30 PM	Crystal	Tan Footless	Nude Leo	None	Side Part/ Low Bun	Peal hair clip on right side of bun
	Sr. 4-7 Tap	Monday	5:00-5:45 PM	Jessica	None	Nude Leo	Black Tap	Side Part/ Low Bun	YPG rhinestone on right side of bun
	Sr. 4-7 Modern Fusion	Tuesday	7:30-8:45 PM	Ashley	None	Nude Leo & YPG Basic Black Shorts	None	Side Part/ Low Bun	YPG rhinestone on right side of bun
	Sr. 4-7 Hip Hop	Tuesday	8:45-9:15 PM	Ashley	None	Nude Leo	MPA Hip Hop	Side Part/ Low Bun	Bandana tied around head
Sr. 4-7 Musical Theater	Thursday	4:15-5:15 PM	Jessica	Tan Fishnets	Nude Leo	Tan Character	Side Part/ Low Bun	Gloves and feather hair clip on right side of bun	

	Class	Day	Time	Instructor	Tights	Undergarments	Shoes	Hair	Other
Pre-Professional 2/3	PP 2 Jazz	Monday	6:45-8:00 PM	Crystal	Tan Footed	Nude Leo	Tan Jazz	Side Part/ Low Bun	YPG rhinestone on right side of bun
	PP 2 Modern	Monday	8:00-9:15 PM	Crystal	Tan Footless	Nude Leo	None	Side Part/ Low Bun	YPG rhinestone on right side of bun
	PP 2 Ballet	Thursday	4:15-5:30 PM	Meghan	Pink Footed	Nude Leo	Pink Ballet	Side Part/ Low Bun	Pearl headband
	PP 2/3 Ballet	Tuesday	7:30-9:00 PM	Meghan	Pink Footed	Nude Leo	Pink Ballet	Side Part/ Low Bun	MPA will provide hairpiece
	PP 3 Ballet	Wednesday	5:15-6:45 PM	Celia	Pink Footed	Nude Leo	Pink Ballet	Side Part/ Low Bun	Floral appliqué on right side of bun
	PP 3 Jazz	Wednesday	7:15-8:30 PM	Meghan	Tan Footed	Nude Leo	Tan Jazz	Side Part/ Low Bun	YPG rhinestone on right side of bun
	PP 3 Modern	Thursday	4:15-5:30 PM	Crystal	Tan Footless	Nude Leo	None	Side Part/ Low Bun	YPG rhinestone on right side of bun

	Class	Day	Time	Instructor	Tights	Undergarments	Shoes	Hair	Other
Pre-Professional 4	PP 4/5 Jazz	Monday	5:45-7:15 PM	Meghan	Black Fishnets	Nude Leo & basic black shorts	Black Jazz	Side Part/ Low Bun	YPG rhinestone on right side of bun
	PP 4/5 Modern	Wednesday	5:45-7:15 PM	Crystal	None	Nude Leo	None	Side Part/ Low Bun	YPG rhinestone on right side of bun
	PP 4/5 Ballet	Wednesday	7:15-8:45 PM	Celia	Pink Footed	Nude Leo	Pink Ballet	Side Part/ Low Bun	Mini tiara
	PP 4/5 Pointe	Wednesday	8:45-9:30 PM	Celia	Pink Footed	Nude Leo	Pink Pointe	Side Part/ Low Bun	MPA will provide a crown and tulle
	PP 4 Ballet	Thursday	7:30-9:00 PM	Ben	Pink Footed	Nude Leo	Pink Ballet	Side Part/ Low Bun	Floral appliqué on right side of bun
	PP 4 Pointe	Thursday	9:00-9:30 PM	Ben	Pink Footed	Nude Leo	Pink Pointe	Side Part/ Low Bun	MPA will provide a crown and tulle
	PP 4/5 Ballet	Saturday	10:00-11:30 AM	Meghan	Pink Footed	Nude Leo	Pink Ballet	Side Part/ Low Bun	Pearl headband
	PP 4/5 Pointe	Saturday	11:30-12:15 PM	Meghan	Pink Footed	Nude Leo	Pink Pointe	Side Part/ Low Bun	MPA will provide a crown and tulle



Midwest Performing Arts
Spring Concert of Dance 2025
COSTUME REQUIREMENTS

	Class	Day	Time	Instructor	Tights	Undergarments	Shoes	Hair	Other
Pre-Professional 5	PP 4/5 Jazz	Monday	5:45-7:15 PM	Meghan	Black Fishnets	Nude Leo & basic black shorts	Black Jazz	Side Part/ Low Bun	YPG rhinestone on right side of bun
	PP 5/6 Ballet	Tuesday	5:15-6:45 PM	Ben	Pink Footed	Nude Leo	Pink Ballet	Side Part/ Low Bun	Floral appliqué on right side of bun
	PP 5/6 Pointe	Tuesday	6:45-7:30 PM	Ben	Pink Footed	Nude Leo	Pink Pointe	Side Part/ Low Bun	MPA will provide a crown and tulle
	PP 4/5 Modern	Wednesday	5:45-7:15 PM	Crystal	None	Nude Leo	None	Side Part/ Low Bun	YPG rhinestone on right side of bun
	PP 4/5 Ballet	Wednesday	7:15-8:45 PM	Celia	Pink Footed	Nude Leo	Pink Ballet	Side Part/ Low Bun	Mini tiara
	PP 4/5 Pointe	Wednesday	8:45-9:30 PM	Celia	Pink Footed	Nude Leo	Pink Pointe	Side Part/ Low Bun	MPA will provide a crown and tulle
	PP 4/5 Ballet	Saturday	10:00-11:30 AM	Meghan	Pink Footed	Nude Leo	Pink Ballet	Side Part/ Low Bun	Pearl headband
	PP 4/5 Pointe	Saturday	11:30-12:15 PM	Meghan	Pink Footed	Nude Leo	Pink Pointe	Side Part/ Low Bun	MPA will provide a crown and tulle

	Class	Day	Time	Instructor	Tights	Undergarments	Shoes	Hair	Other
Pre-Professional 6	PP 6/7 Jazz	Monday	5:45-7:15 PM	Jessica	None	Nude Leo	Black Jazz	Side Part/ Low Bun	Feather hair clip on right side of bun
	PP 5/6 Ballet	Tuesday	5:15-6:45 PM	Ben	Pink Footed	Nude Leo	Pink Ballet	Side Part/ Low Bun	Floral appliqué on right side of bun
	PP 5/6 Pointe	Tuesday	6:45-7:30 PM	Ben	Pink Footed	Nude Leo	Pink Pointe	Side Part/ Low Bun	MPA will provide a crown and tulle
	PP 6/7 Ballet	Thursday	5:15-6:45 PM	Ben	Pink Footed	Nude Leo	Pink Ballet	Side Part/ Low Bun	Floral crown around bun
	PP 6/7 Pointe	Thursday	6:45-7:30 PM	Ben	Pink Footed	Nude Leo	Pink Pointe	Side Part/ Low Bun	MPA will provide a crown and tulle
	PP 6/7 Modern	Thursday	7:30-9:00 PM	Jessica	None	Nude Leo	None	Side Part/ Low Bun	YPG rhinestone on right side of bun
	PP 6/7 Ballet	Saturday	10:00-11:30 AM	Jessica	Pink Footed	Nude Leo	Pink Ballet	Side Part/ Low Bun	MPA will provide hair piece
	PP 6/7 Pointe	Saturday	11:30-12:15 PM	Jessica	Pink Footed	Nude Leo	Pink Pointe	Side Part/ Low Bun	MPA will provide a crown and tulle

	Class	Day	Time	Instructor	Tights	Undergarments	Shoes	Hair	Other
Pre-Professional 7	PP 6/7 Jazz	Monday	5:45-7:15 PM	Jessica	None	Nude Leo	Black Jazz	Side Part/ Low Bun	Feather hair clip on right side of bun
	PP 7 Ballet	Tuesday	5:15-6:45 PM	Meghan	Pink Footed	Nude Leo	Pink Ballet	Side Part/ Low Bun	Floral appliqué on right side of bun
	PP 7 Pointe	Tuesday	6:45-7:30 PM	Meghan	Pink Footed	Nude Leo	Pink Pointe	Side Part/ Low Bun	MPA will provide a crown and tulle
	PP 6/7 Ballet	Thursday	5:15-6:45 PM	Ben	Pink Footed	Nude Leo	Pink Ballet	Side Part/ Low Bun	Floral crown around bun
	PP 6/7 Pointe	Thursday	6:45-7:30 PM	Ben	Pink Footed	Nude Leo	Pink Pointe	Side Part/ Low Bun	MPA will provide a crown and tulle
	PP 6/7 Modern	Thursday	7:30-9:00 PM	Jessica	None	Nude Leo	None	Side Part/ Low Bun	YPG rhinestone on right side of bun
	PP 6/7 Ballet	Saturday	10:00-11:30 AM	Jessica	Pink Footed	Nude Leo	Pink Ballet	Side Part/ Low Bun	MPA will provide hair piece
	PP 6/7 Pointe	Saturday	11:30-12:15 PM	Jessica	Pink Footed	Nude Leo	Pink Pointe	Side Part/ Low Bun	MPA will provide a crown and tulle

	YPG Company	Dance	Choreographer	Tights	Undergarments	Shoes	Hair	Dancer Brings
Youth Performance Groups	Jr. Company	Movement	Meghan H.	Tan Footless	Nude Leo	None	Side Part/ Low Bun	Yellow dress and yellow flower hair clip
		Rhythm Nation	Cesar	None	Basic black leo and leggings	Black Jazz	Side Part/ Low Bun	Olive jacket and black hat
		YPG Opener	Jessica	Tan Footed	Nude Leo	Tan Jazz	Side Part/ Low Bun	YPG rhinestone on right side of bun
	Sr. Company	Hairspray!	Cesar	Tan Footed	Nude Leo, basic black leo, shorts, leggings	Black Jazz	Side Part/ Low Bun	School uniform & accessories, poodle skirt and accessories, polka dot top & accessories
		Monsieur Desplat's Musical Suite	Crystal	None	Basic Black Leo & Shorts	None	Side Part/ Low Bun	Skirt and hair tie
		Whispers of the Forest	Richard	None	Basic Black Leo & Shorts	None	Side Part/ Low Bun	Green skirt and hair clip
		YPG Opener	Jessica	Tan Footed	Nude Leo	Tan Jazz	Side Part/ Low Bun	YPG rhinestone on right side of bun
	Jr. Ensemble	Hummed Low	Jacob	None	Nude Leo	None	Side Part/ Low Bun	Blue dress and hair clip
		Layers of Becoming	Richard	None	Basic Black Leo & Shorts	None	Side Part/ Low Bun	Red/black long skirt and hair clip
		The Wall	Robert	None	Basic black leo and leggings	None	Side Part/ Low Bun	Geometric leotard and YPG rhinestone
		Dancin' Fool	Meghan H.	Tan Fishnets	Nude Leo & Basic black shorts	Black Character	Side Part/ Low Bun	Blue polka dot dress, black belt and long black gloves
		YPG Opener	Jessica	Tan Fishnets	Nude Leo	Tan Jazz	Side Part/ Low Bun	YPG rhinestone on right side of bun
	Sr. Ensemble	Egypt	Jacob	None	Nude Leo	None	Side Part/ Low Bun	Leotard, black harem pants, hair tie
		Bang Your Drum!	Jessica	None	Basic black leo and shorts	None	Side Part/ Low Bun	Blue overlay dress and YPG rhinestone hair clip
		Come Rain or Come Shine	Cesar	Tan Fishnets	Nude leo, basic black shorts	Tan Character	Side Part/ Low Bun	Pink dress, long white gloves and YPG rhinestone hair clip
		American Sing, Sing, Swing!	Meghan M.	None	Nude Leo	Black Jazz	Side Part/ Low Bun	Black jazz pants, teal leotard, black suspenders & white gloves
		YPG Opener	Jessica	Tan Fishnets	Nude Leo	Tan Jazz	Side Part/ Low Bun	YPG rhinestone on right side of bun
		Beautiful Day	Cam	None	Basic black leo and leggings	None	Side Part/ Low Bun	Blue mesh top and YPG rhinestone hair clip
		All The Lonely People	Maudie	None	Basic black leo and leggings	None	Side Part/ Low Bun	Black tunic and YPG rhinestone hair clip
		MJ	Grace	None	Nude Leo	Black Jazz	Side Part/ Low Bun	Black jazz pants, pink leotard, black blazer and one white glove
Go Live Your Dream		Sam	Pink Footed	Basic black leo	Pink Pointe	Side Part/ Low Bun	Yellow dress and hair bow	
When We Were Young		Evelyn	None	Nude Leo	None	Side Part/ Low Bun	Mocha dress and YPG Rhinestone hair clip	
Let's Groove		Lucy	Tan Fishnets	Nude Leo	Tan Jazz	Side Part/ Low Bun	Multicolored jazz fringe costume and YPG rhinestone hairclip	
Rain Dance		Hannah	None	Nude Leo and basic black shorts	Tan Ballet	Side Part/ Low Bun	Multicolored leotard and black mesh skirt	
Empty Bench	Summar	None	Basic black leo	Tan Ballet	Side Part/ Low Bun	Cream mesh pants and YPG rhinestone hair clip		



SPRING CONCERT MAKE-UP GUIDELINES

Things You Will Need:

- Foundation
- Concealer (optional)
- White and brown eye shadows
- Fluffy eye shadow brush
- Black pencil eye liner
- White pencil eye liner
- Eyebrow pencil (color appropriate for your brows)
- Eyelash curler
- Mascara
- Fluffy blush brush
- Pink blush (one darker shade and one brighter)
- Lip pencil (color corresponding to lipstick color)
- Lip stick (darker pink or red)
- Lip gloss (optional)

Instructions:

Apply primer. Dot primer on the forehead, cheeks and chin. Blend out so the entire face is covered with a layer of primer. Allow primer to soak in. Primer creates a barrier that prolongs makeup and makes it appear fresh longer.

Apply foundation. Dot foundation in the same areas as Step 1 and blend out. A tinted moisturizer or lightweight foundation should do the trick for young girls as they seldom have flawed skin. If there are under-eye circles, pat concealer on them for additional coverage.

Apply eye makeup. Eye makeup is one of the most crucial steps in applying stage makeup. The eyes should pop dramatically so the audience can see a dancer's expression from afar. Dust brown shadow from the eyelid up to the eye crease. Color below the eyebrow with white shadow. Line the upper lash line with black pencil eyeliner. Create short strokes and then connect the "dots" for a pristine line. Use white pencil at outer crease of the eye. Curl eyelashes with lash curler. Apply mascara to lashes.

If using faux lashes, you may have to cut lashes in half so they fit a young girl's eyes. Apply lash glue to the faux lashes using a Q-tip and allow glue to reach a tacky consistency (which takes about 10 seconds). Gently apply the faux lash to the lash line and press the lash down using the end of a small makeup brush (the end without bristles). Once lash glue has dried, go over faux and natural lashes with mascara to blend hairs together for a flawless look.

Apply blush. Swirl the fluffy blush brush in a pink blush and tap onto the apples of the cheeks. Without picking up additional product, buff blush to create a natural-looking flush without any harsh lines.

Apply lip products. Line and fill lips with a lip liner. Apply lipstick and blot with a tissue. Finish with lip-gloss

Videos:

#1 Older dancers: http://www.youtube.com/watch?v=eE_o7766rKE

#2 Younger dancers: <http://www.youtube.com/watch?v=YrRF5fb7nzg&feature=relate>



SPRING CONCERT HAIR GUIDELINES

How to make a low Ballet bun with a side part.

Things you will need:

- Water
- Hair spray or hair gel.
- Bobby pins/Hair pins to match color of hair.
- Hair tie to match color of hair.
- Hair net to match color of hair.

Instructions:

1. Wet hair and part on side of choice about 3/4 the way to back of head.
2. Slick back smoothly into a ponytail lined up around the top edge of the ears. Gel and hairspray to help get smooth look and secure any "fly always."
3. Twist hair and start to wrap it around the ponytail securing with bobby pins and hairpins as you go around. Note: be sure to get a little bit of hair from head and a little from the twisted pony into the pin together. This will help secure. Note: for really thick hair it is helpful to separate hair into two twists, doing one wrap at a time.
4. Take hair net and wrap it around bun to tie in any loose hairs and then bobby pin in the hairnet. 5. Give whole head one final spray.

Note: if securing a head piece use bobby pins to help secure and make sure to send your dancer with extras just in case.

Here is a link to a helpful video: <https://youtu.be/XP6lfZ4z-JI>



**EPS – Entertainment Photography Specialists
is coming to Midwest Performing Arts!
May 17 - 21, 2025**



With EPS, we photograph your dancer doing what they do best! We will capture your dancer leaping, spinning, dancing & showing off all their best stuff. Got a killer aerial? We got you. Amazing Firebird? No problem! More into Contemporary? Yeah, we got that too!

The best part, EPS offers these high-quality studio images of your dancer at an affordable cost! Our photo packages start at just \$35!

The entire team at EPS have all been professional dancers and we use that knowledge & expertise to create amazing dance images! This is our specialty; all we do is work with performers!

On April 12th, you will receive an email with information on how to sign up for photo days! This email will come from epsgallery@eps-photo.com





How it all works!

- **Book:** Each dancer will pre-purchase a photo package and book appointment times for each costume/look they wish to take photos in.
- **Sessions:** Photo sessions are 5-minutes, during your session we will take between 30 – 40 images in different poses to ensure you have a great selection of images to choose from.
- **Packages:** We offer individual packages for those taking images in one costume/look & also multiple session packages for those with multiple costumes or siblings.
- **Gift Certificate:** After your photo shoot, you will receive a gift certificate code for the amount of your pre-purchased photo packages. You will use this code when selecting your images after the photo shoot.
- **Flexibility:** You are not locked into your initial package choice! You can use your gift certificate toward absolutely anything you wish to purchase after your photo shoot including upgrading your package, purchasing additional images, or purchasing a different product entirely!!
- **Image Gallery:** Your Image gallery will be emailed to you the day after your photo session & once you select your images by placing your final order, your images will be mailed directly to the address to you choose! Your image gallery will be available for 6-months following your photo shoot

PRO TIPS:

- **Your Look/costume:** You're not confined to recital costumes only – showcase your favorite dress, leotard or opt for a more casual look! We love the Urban/Dance style!
- **Posing:** As professional dancers & choreographers we take care of guiding you with poses, however, do you have a Signature Move? Great extension or a flexible back? Let us know what makes you...well...you! That way we can highlight your abilities and capture it in your images!
- **Warm UP:** This is not your Grandmothers photo shoot where you get one image in first position! Prepare to dance, leap and more during your session, so be sure to warm up and stretch out before coming in to shine!



EPS - PHOTO PACKAGES

1 BRONZE PACKAGE • \$35

PRINT ONLY PACKAGE!

Package includes:

- One Appointment Time
- One Image Selection from session
- Plus, the below items for your image selection:
- 2 – 5x7 Prints
- 2 – 4x5 Prints
- 4 – Wallet Prints



SILVER PACKAGE • \$45

PRINT & DIGITAL PACKAGE!

Package Includes:

- One Appointment Time
- One Image Selection from session
- Plus, the below items for your image selection :
- 2 – 5x7 Print
- 2 – 4x5 Print
- 4 – Wallet Prints
- 1 – Social Media Digital Image



GOLD PACKAGE • \$65

PRINT & DIGITAL PACKAGE!

Package includes:

- One Appointment Time
- One Image Selection from session
- Plus, the below items for your image selection :
- 1 – 8x10 Print
- 2 – 5x7 Prints
- 2 – 4x5 Prints
- 4 – Wallet Prints
- 1 – Printable Digital Image



PLATINUM PACKAGE • \$160

PRINT & DIGITAL PACKAGE!

Package Includes:

- Up to 4 Appointment Times
- 4 Image Selections in Total
- Plus, the below items for each image selection :
- 1 – 8x10 Print
- 2 – 5x7 Prints
- 2 – 4x5 Prints
- 4 – Wallet Prints
- 1 - Printable Digital Image



SAPPHIRE PACKAGE • \$150

DIGITAL ONLY PACKAGE!

Package Includes:

- 5 Image Selections in Total
- Up to 5 Appointment Times
- Plus, the below items for each image selection :
- 1 - Printable Digital Image



DIAMOND PACKAGE • \$240

PRINT & DIGITAL PACKAGE!

Package Includes:

- Up to 6 Appointment Times
- 6 Image Selections in Total
- Plus, the below items for each image selection :
- 1 – 8x10 Print
- 2 – 5x7 Prints
- 2 – 4x5 Prints
- 4 – Wallet Prints
- 1 – Printable Digital Image



PLEASE NOTE – YOUR IMAGES WILL BE SHIPPED TO YOUR ADDRESS OF CHOICE.
SERVICE, TAXES, & SHIPPING FEES ARE NOT INCLUDED IN ANY PRE-PURCHASED PACKAGE FEES.

YOUR GIFT CERTIFICATE WILL BE FOR THE VALUE OF THE PHOTO PACKAGE PRICE ONLY.
SERVICE FEES, TAXES & SHIPPING FEES ARE NOT INCLUDED IN YOUR GIFT CERTIFICATE AMOUNT.

Questions, Contact us at:
Phone: 844-263-5678
Email: Orders@EPS-Photo.com





Midwest Performing Arts

2025 Spring Concert of Dance Program Advertisement



February 2024

Dear MPA Parents and Family,

Join Midwest Performing Arts as we present our *Spring Concert of Dance* on Friday, May 23rd and Saturday, May 24th, performed at the Sauk Prairie High School River Arts Center.

MPA will be providing a program guide during the show, and we are giving you the opportunity to advertise in the program. This advertisement will help produce MPA's wonderful show and sponsor the arts in the Waunakee and surrounding communities. This is a great way to get value from your advertising dollars.

Ads will be for sale starting with a 1/4 page for \$50 and gradually increase from there. MPA has cover pages available in color starting at \$100. Attached is an example of advertisement sizes for you to choose from.

We hope you will help us in making MPA's *Spring Concert of Dance* a success. This is a great way to get involved. If you need help creating your ad, all imagery and text must be handed in by **April 21st**. If you already have a designed ad with no editing needed, these must be handed in by **May 5th**. All program ad submissions and any questions can be submitted to Jessica at jessica@mpadance.com.

For more information about Midwest Performing Arts, please visit our website: www.mpadance.com.

Thanks again for supporting MPA's Spring Concert of Dance.

Sincerely,

Jessica Ballweg
School Director



Midwest Performing Arts

2025 Spring Concert of Dance Program Advertisement



Thank you for donating to our 2025 *Spring Concert of Dance* production! Please complete the form below to have you or your company's advertisement placed in our concert Program.

Company/Name: _____

Contact Person: _____

Phone: _____ Email: _____

Company Address: _____

Please select your Advertisement size:

- Friend of MPA \$10.00 - \$49.99 - name in program
- Supporter of MPA \$50-\$125 for ¼ pg. ad
 - ¼ Black & White ad – Inside Page - \$50.00
 - ¼ Color ad – Front or Back Inside Cover - \$100
 - ¼ Color ad – Back Cover - \$112.50
- Benefactor of MPA \$125 - \$200 for ½ pg. ad or black and white full-page ad
 - ½ Black & White ad – Inside Page - \$100
 - ½ Color ad – Front or Back Inside Cover - \$200
 - ½ Color ad – Back Cover - \$225
 - Full page Black & White ad – Inside Page - \$200
- Patron of MPA \$400 and up for Full Page Color Ad
 - Full page Color ad – Front or Back Inside Cover - \$400
 - Full page Color ad – Back Cover - \$450

Need help designing an ad? Please submit this form with a check made out to MPA by **APRIL 21ST**.
Already have a designed ad? Please submit this form with a check made out to MPA by **MAY 5TH**.

Midwest Performing Arts
604 E. Main St, Unit 1B
Wauwaukee, WI 53597

www.mpadance.com
608 849-4922

Please submit advertisement text, logos/ photos to Jessica Ballweg at: jessica@mpadance.com

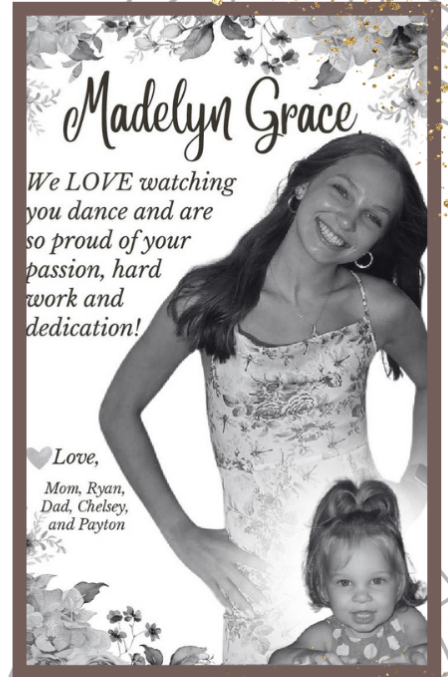
Thank you for your support,
Jessica Ballweg and Midwest Performing Arts



2025 Spring Concert of Dance

PROGRAM ADS

Need your AD designed? - DUE APRIL 21st
Already have an ad? - DUE MAY 5th



**AVAILABLE
SIZES**
1/4 PAGE AD
1/2 PAGE AD
FULL PAGE AD

**AVAILABLE
IN COLOR AND
BLACK AND WHITE!**
This could be your ad!
➔
PLEASE SEE THE
FRONT DESK FOR
MORE INFORMATION.

CONGRATULATIONS SR. ENSEMBLE
we loved watching you perform!

Sophia Cliff	Maudie Heideman	Samantha Pokorny
Kate Wernsing	Payton Isaachsen	Maddy Rosenthal
Finley Dodd	Josie Karls	Stella Schmidt
Hannah Ducat	Cam Fanta	Lucy Troester
Melanie Eisbrener	Grace Kuiper	Ruby Marx
Evelyn Suchomel	Summer Lilley	Grace Walbrun



Midwest

Performing Arts

2025 Spring Concert of Dance
Program Ad Sizing and Pricing
***Note – space is limited! All ads will be
placed in order of payment receipt.

1/4 Page Ad

Approximate Size
2.4” by 3.8”

Black and White:

\$50.00 - Inside Page

Color:

\$100 – Front or Back

Inside Cover

* Availability Pending

\$112.50 – Back Cover

* Availability Pending

1/2 Page Ad
Approximate Size
5” by 3.8”

Black and White:

\$100 - Inside Page

Color:

\$200 – Front or Back Inside Cover

* Availability Pending

\$225 – Back Cover

* Availability Pending

Full Page Ad

Approximate Size
5” by 7.86”

(Size for Back Cover: 5.75” by 8.75”)

Black and White:

\$200 - Inside Page

Color:

\$400 – Front or Back Inside Cover

* Availability Pending

\$450 – Back Cover

* Availability Pending